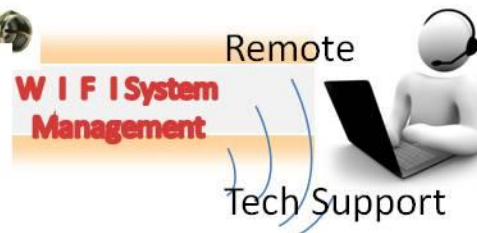
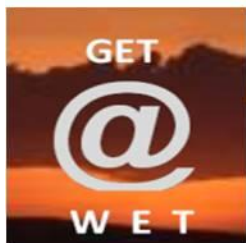
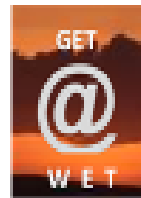


FAQ 100 – How do I access my Cloud Web Portal



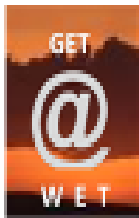
@ Wits End Technology



Who are we???



What is the Cloud???



@ Wits End Technology

- **@ Wits End Technology (*WET*)** serves as an off-site, full service information technology (IT) solution provider for small and medium sized businesses



What is the Cloud?

- **In the past, the cloud could be associated with SharePoint services.**
- **Many organizations use a version of the Cloud called SharePoint to create websites and as a secure place to store, organize, share, and access information from almost any device.**



How are we different?

- ***WET*** takes the cloud to a different level!

- Backup and access important business files and documents



- Access your Business Internet Cloud Site from any PC, Smartphone or Tablet

- Securely connect to office PC's on your own Private Network and share files or applications stored on any of your computers or servers

- Upload and download instructional videos and audio files on-demand

How are we different? (Cont.)

- Application Hosting



- P.C. Backup



- Individual Access to Cloud Service

- Web Hosting

- Secure Corporate file sharing

Accessing the Cloud Web Portal

- The following steps will guide you through logging into your Cloud services via your personal computer or MAC.....



Welcome to the Cloud Portal



Type the following Web address into your web browser

<http://www.witsendtechnology.com>

•Click on the icon labeled iCloudConnect.net Web Access or you can go directly to

<http://www.icloudconnect.net>

Welcome to the Cloud Portal

QNAS QTS NAS1-WET

Username
Password

Remember me
 Secure login

Login

GET @ WET

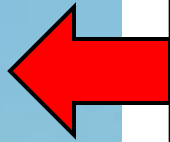
Welcome to
icloudconnect.net
Powered By @ Wits End
Technology

- Click Login to enter your username and password
- Click the **blue arrow** pointing to the right

Access File Station

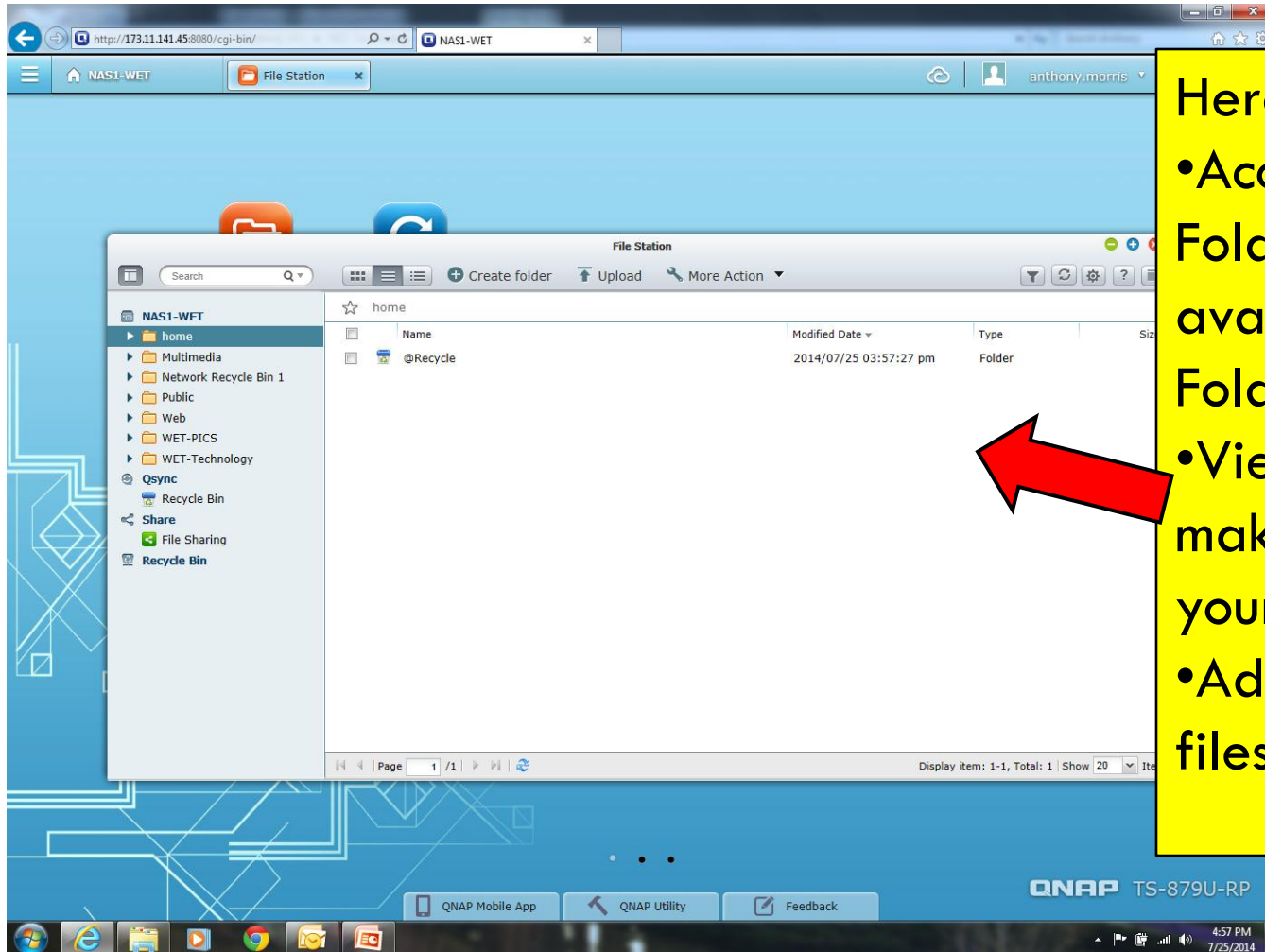


File Station



- Once logged in, you will be taken to a screen that will have an icon labeled “File Station”
- Once there double click on the icon

View your files



Here, you can

- Access Your Home Folder and other available Shared Folders.

- View, download and make changes to your files

- Add folders, upload files or delete files



For additional questions and
information visit us online

www.witsendtechnology.com