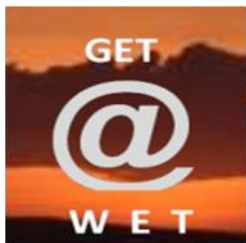


# FAQ 105 – How do I connect Qsync and synchronize files



**W I F I System Management**



# @ Wits End Technology

## Who are we???



# @ Wits End Technology

- **@ Wits End Technology (*WET*)** serves as an off-site, full service information technology (IT) solution provider for small and medium sized businesses



# What is the Cloud?

- **Simply put, the cloud refers to software and services that run on the internet instead of your local computer.**
- **Most of these services can be accessed through web browsers like Firefox and Internet Explorer and some companies offer mobile apps.**
- **Examples of cloud services include Google Drive, Apple iCloud, Dropbox and Microsoft OneDrive just to name a few.**
- **Advantage of cloud service is accessibility on any device with an internet connection.**
- **Disadvantage of cloud service is internet service interruptions or outages on the server side as well as just plain ole poor internet connection equals no access.**

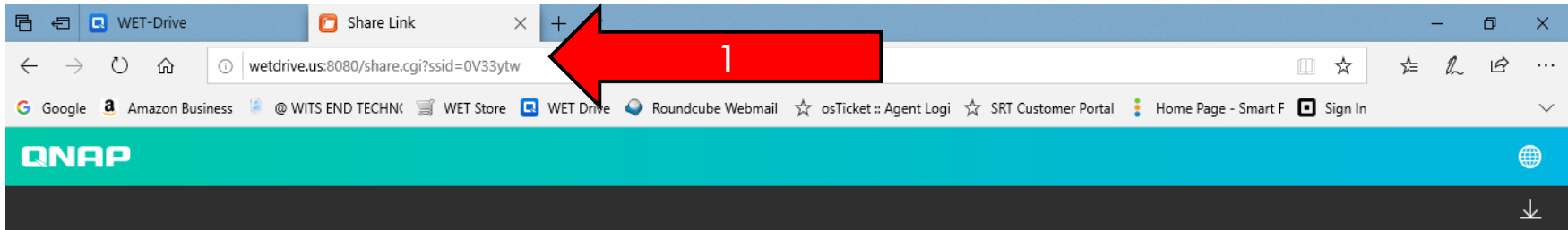


# Connecting Qsync & Syncing Files

- The following steps will guide you through connecting Qsync and synchronizing your files



# Welcome to the Cloud Portal



## Customer Downloads

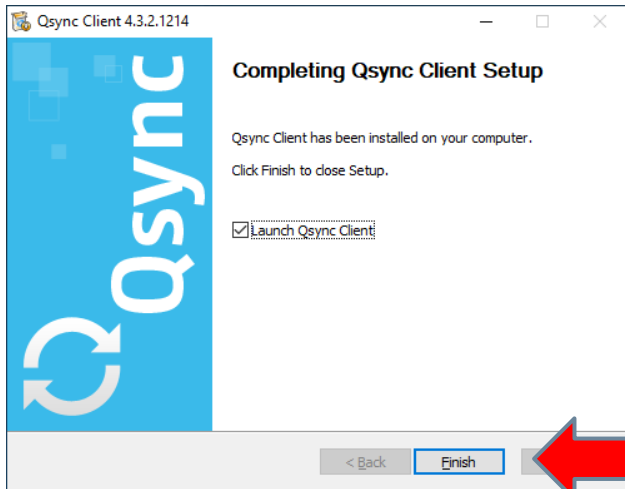
Valid until: Always valid

Name	Date - Time	Size	Action
QNAPQsyncClientMac-3.3.1.1123.dmg	2019/02/12 01:41:23 pm	14.08 MB	↓
QNAPQsyncClientUbuntu64-1.0.1.1213.deb	2019/02/12 01:44:04 pm	59.91 MB	↓
QNAPQsyncClientUbuntu86-1.0.1.1213.deb	2019/02/12 01:44:17 pm	58.35 MB	↓
QNAPQsyncClientWindows-4.3.2.1214.exe	2019/02/12 01:40:24 pm	58.74 MB	↓

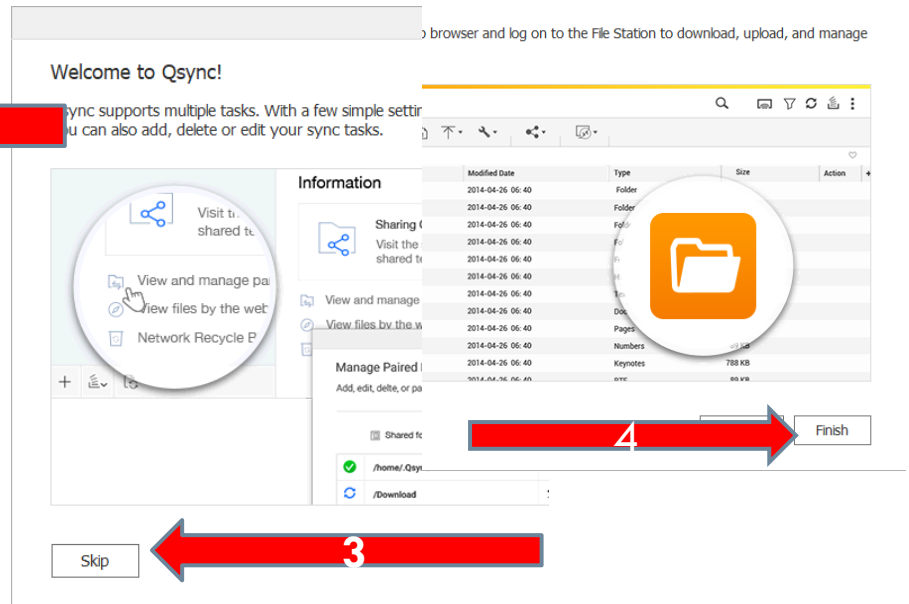
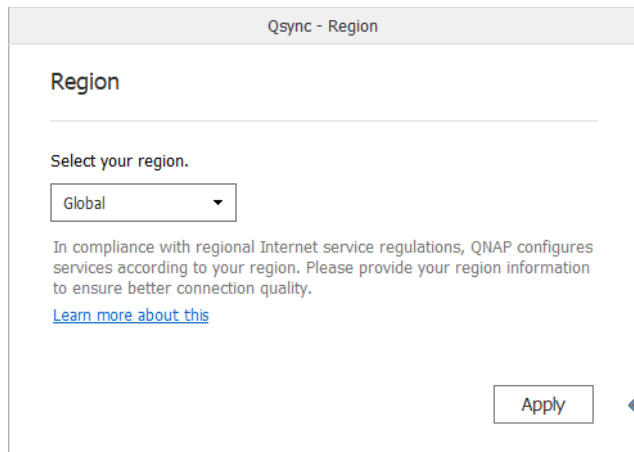
A blue bracket on the left side of the table groups the four download entries. A red arrow labeled '2' points to the download buttons (downward arrows) in the 'Action' column.

1. Click on or copy and paste the following link into your browser:  
<http://wetdrive.us:8080/share.cgi?ssid=0V33ytw>
2. Under Qsync, click the download button for your OS.
3. Install the application on your device

# Launch Qsync



1. “Completing Qsync Client Setup” screen will pop up, click “Finish”
2. “Qsync – Region” screen will appear, click “Apply”
3. “Qsync Start” screen will pop up, click “Skip”
4. On the next screen click “Finish”



# Synchronization; adding a NAS for synchronization.

Qnap

Qsync

Settings | Help | About

## Welcome to Qsync

Please select a NAS for file synchronization with the assigned Qsync folder on your computer.

Search the NAS

Search NAS / wetdrive.us

test

.....

Secure login (https)

Automatically select the best connection method ?

Assign a name to identify this computer on your NAS

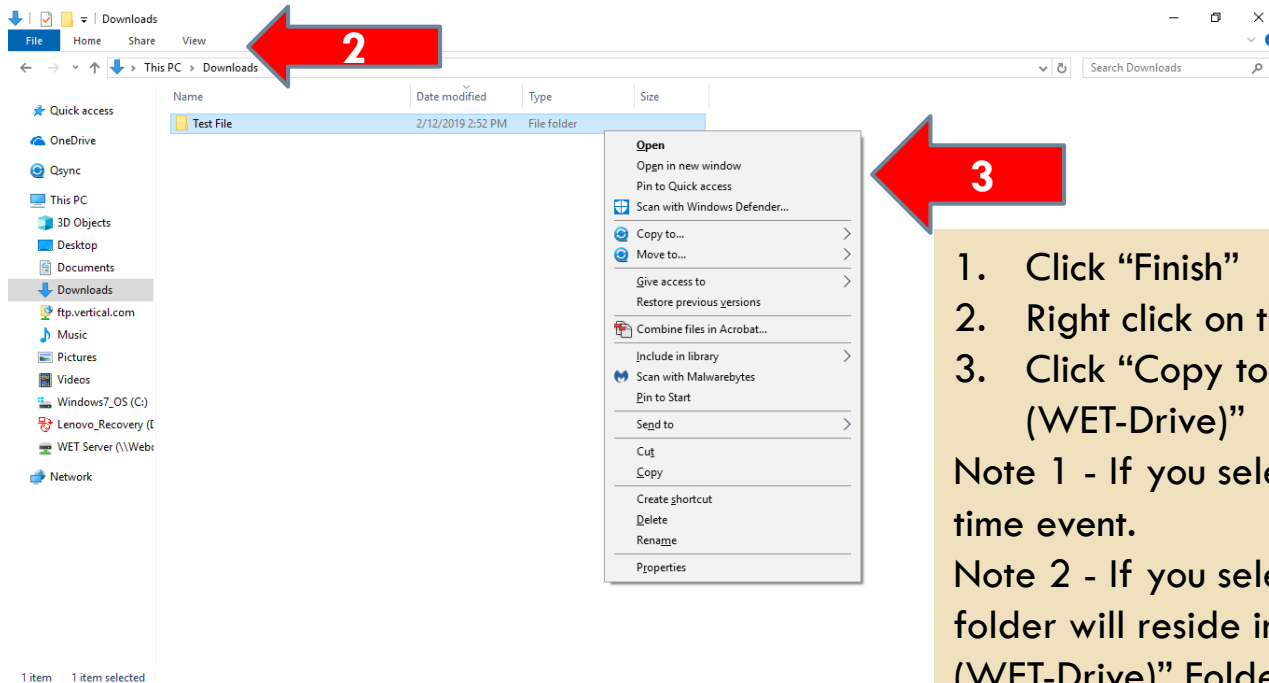
**This PC Name**

Apply Cancel

1. In the open box next to “Search NAS” type **wetdrive.us**
2. Enter Username and Password
3. Give your PC unique name.
4. Click Apply



# Sync Files and/or Folders



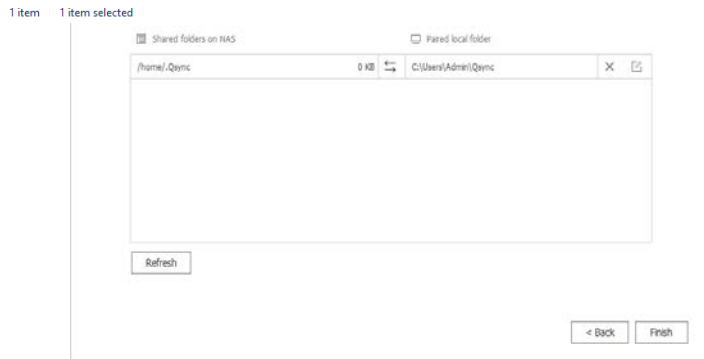
1. Click “Finish”
2. Right click on the selected folder
3. Click “Copy to... or Move to...” Qsync (WET-Drive)”

Note 1 - If you select “Copy”, this is a one time event.

Note 2 - If you select “Move”, that file or folder will reside inside of the “Qsync (WET-Drive)” Folder

Note 3 – Moving or starting a folder in the “Qsync (WET-Drive)” folder will automatically update to the cloud.

Copying a file will not automatically sync to the cloud.



# For Additional Questions Contact Us

---

Having Trouble???

Visit our Technical Support Center

<http://www.helpdesk.witsendtechnology.com/>