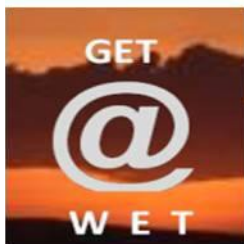


FAQ 101 – How do I backup my Windows PC



@ Wits End Technology

Who are we???



@ Wits End Technology

- @ Wits End Technology (**WET**) serves as an off-site, full service information technology (IT) solution provider for small and medium sized businesses

What is the Cloud?



- **Simply put, the cloud refers to software and services that run on the internet instead of your local computer.**
- **Most of these services can be accessed through web browsers like Firefox and Internet Explorer and some companies offer mobile apps.**
- **Examples of cloud services include Google Drive, Apple iCloud, Dropbox and Microsoft OneDrive just to name a few.**
- **Advantage of cloud service is accessibility on any device with an internet connection.**
- **Disadvantage of cloud service is internet service interruptions or outages on the server side as well as just plain ole poor internet connection equals no access.**

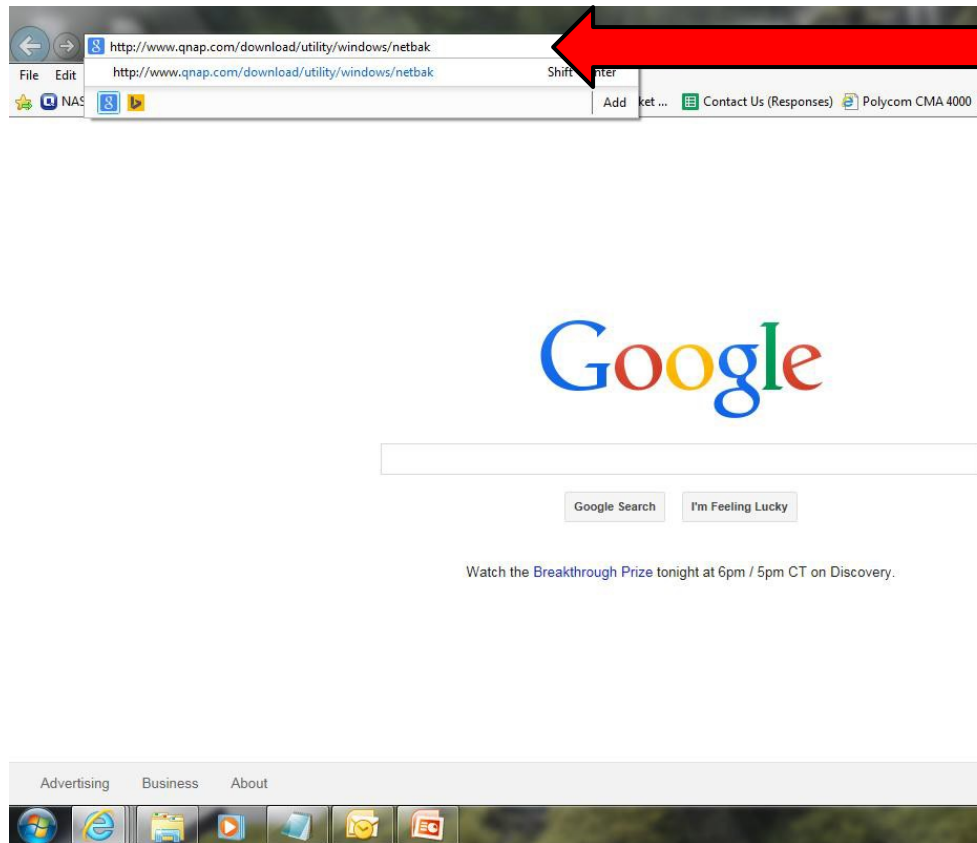


Accessing & Installing Your Client Backup Software

- The following steps will guide you through how to access your client backup software for your Windows PC.



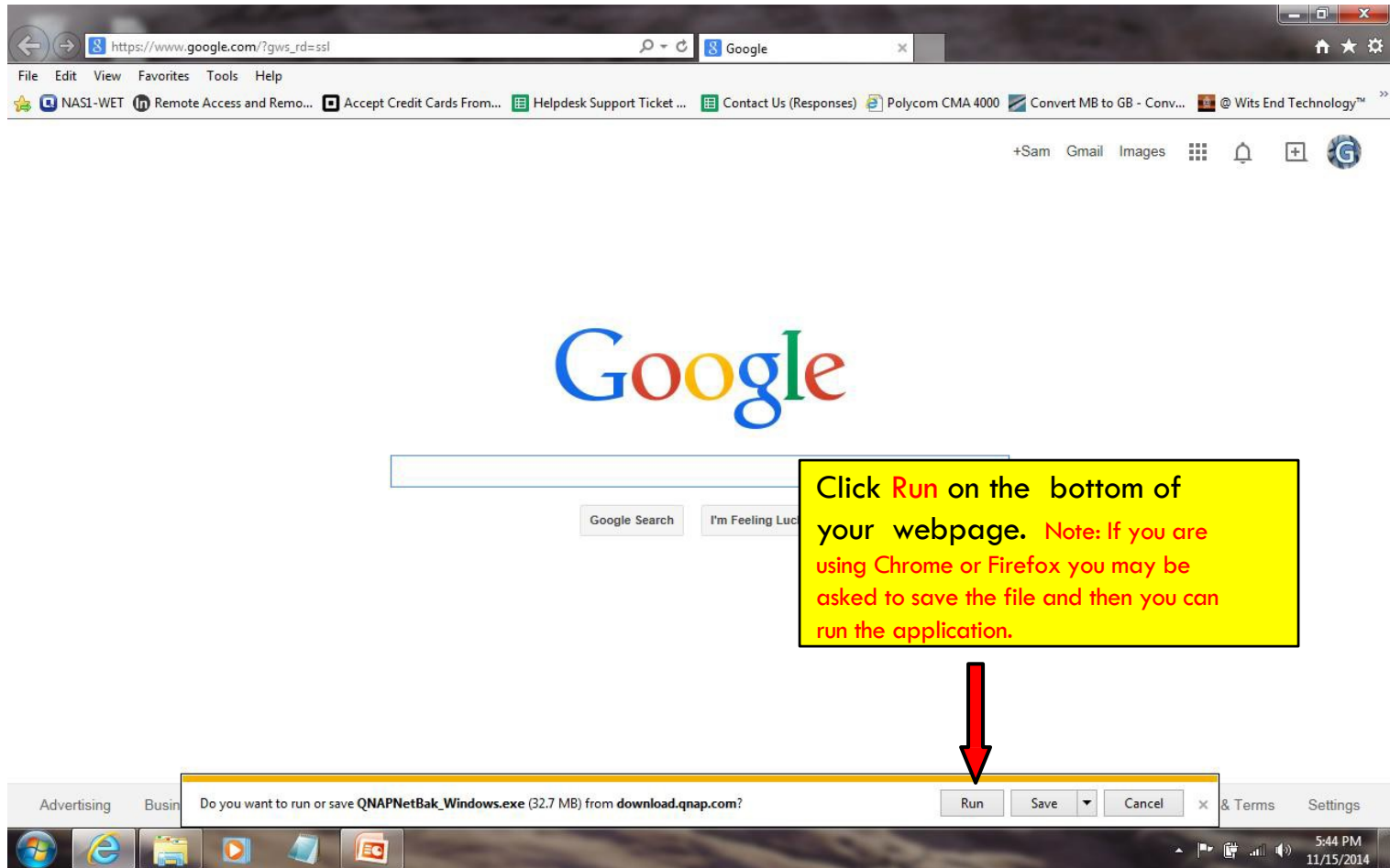
From Your Web Browsers



□ Click on the following link or copy and paste it into your browser.

- <http://www.qnap.com/download/utility/windows/netbak>

Install the Client Application



Complete the install

- ❑ Click “Yes” if you receive a pop up asking “Do you want the following program to make changes to your computer”
- ❑ Click “Ok” after being asked to please select a language
- ❑ Click “Next”
- ❑ Click the box to accept the terms of the license agreement
- ❑ Click “Next”
- ❑ Click “Next” twice
- ❑ Click “Install”
- ❑ Click “Next” when you receive the box indicating that the “Installation Complete”

Launch the application

- Click “Finish”
- Click “Cancel” (you may put a check mark in the box so that you will not receive the notification again)
- Click “Advance Mode”

Set Scheduled Backups

NetBak Replicator - Advanced Mode - Press F1 for help

1) Click the tab marked "Scheduled Backup"

2) Click "Network Location" from the drop down selection located on the right of the screen in the area marked "Please select the destination"

Estimated Backup Size: 0 byte
Contain: 0 Folder(s) 0 File(s)

Please select the destination.

Used: (C:)
Create: <Network Location Wizard>...
<Network Location>...
<Other Location>...
<Remove Location>...

11/15/2014 5:55:45 PM Once

Frequency Settings

☐ Shut down the computer when this scheduled task is completed

Backup Schedule

No.	Scheduled Backup	Destination	Status

Add Start Schedule

Save Logs Remove

<< Simple Mode

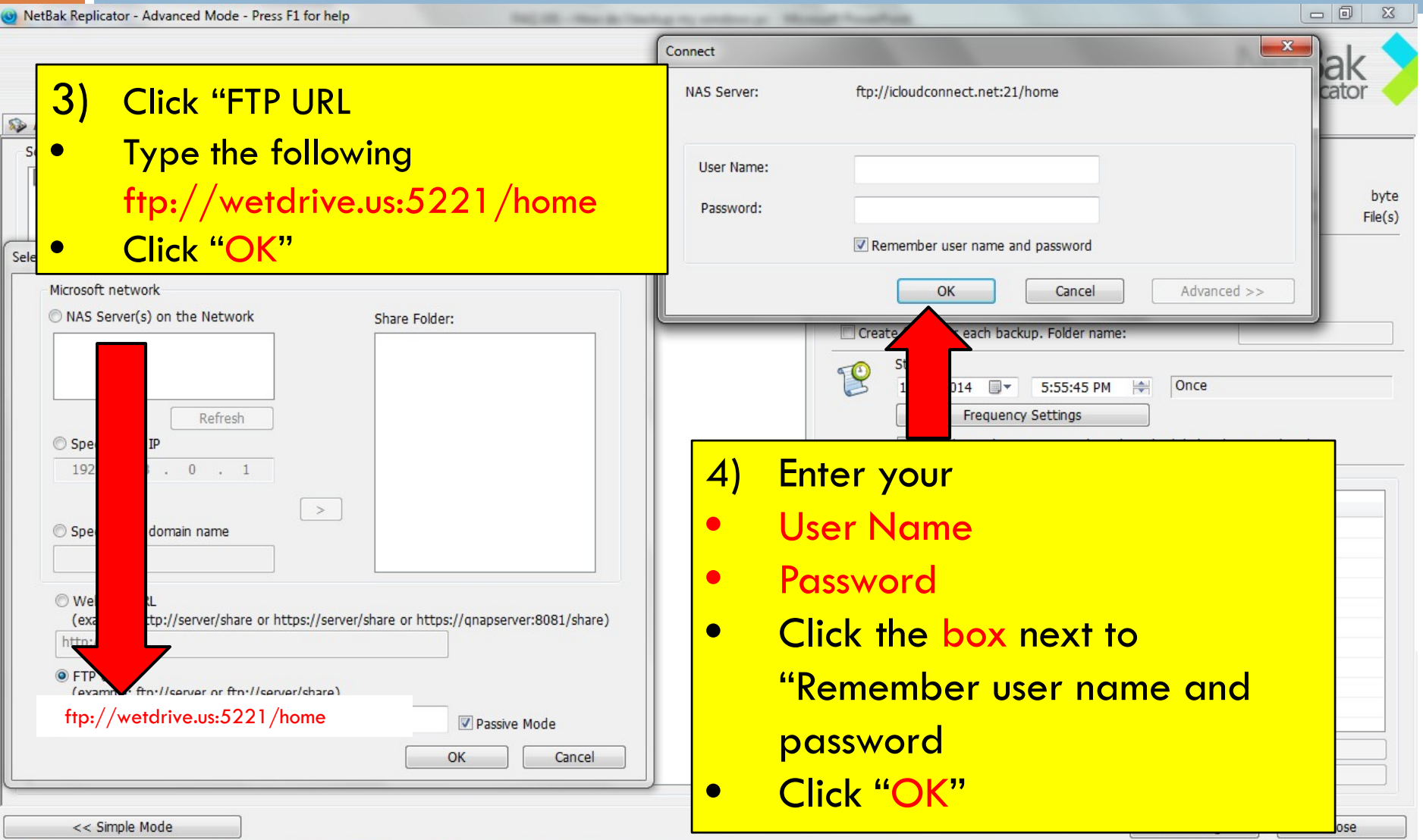
Load Log Close

6:02 PM 11/15/2014

Set Scheduled Backups (Continued)

3) Click "FTP URL"

- Type the following
ftp://wetdrive.us:5221/home
- Click "**OK**"

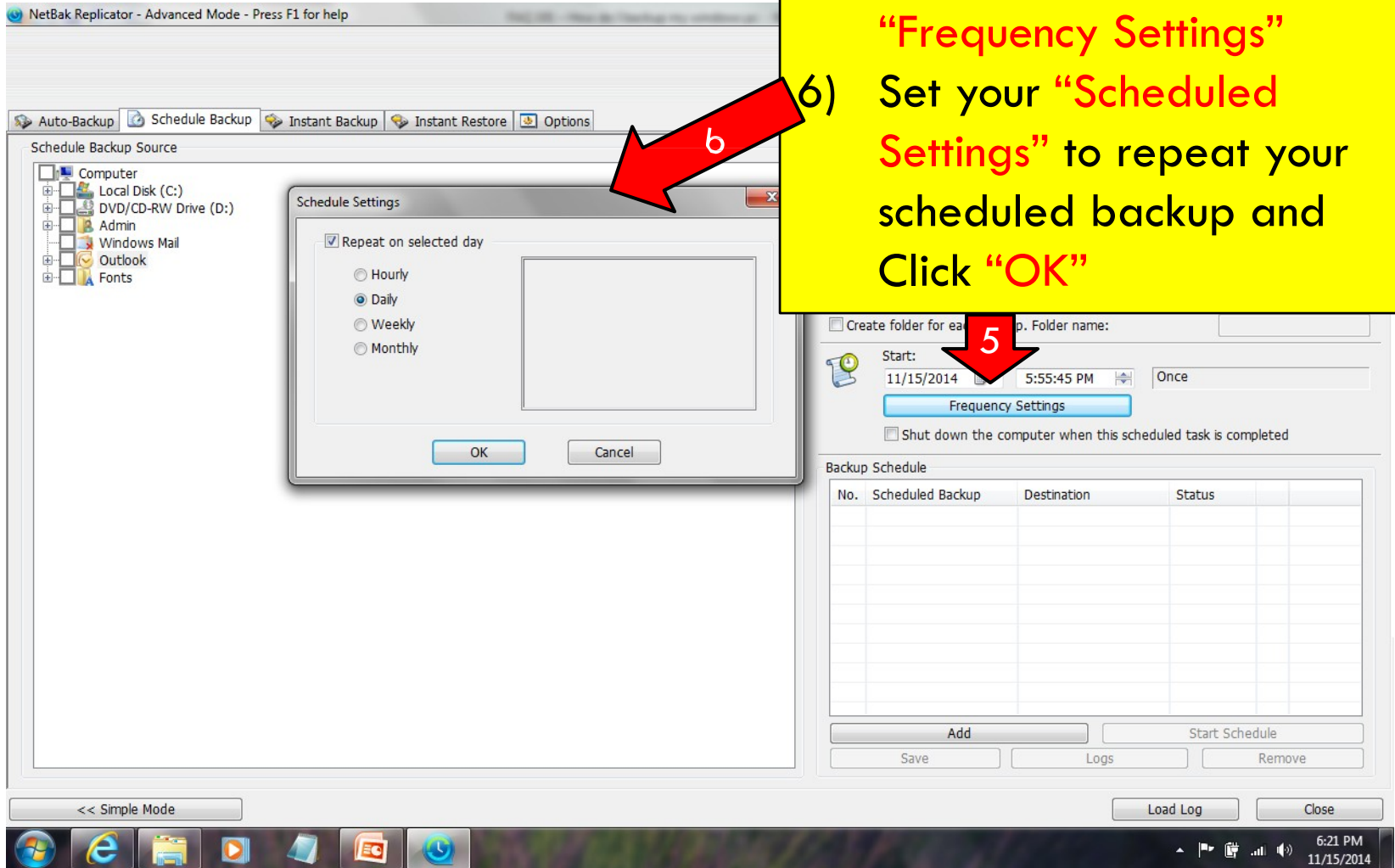


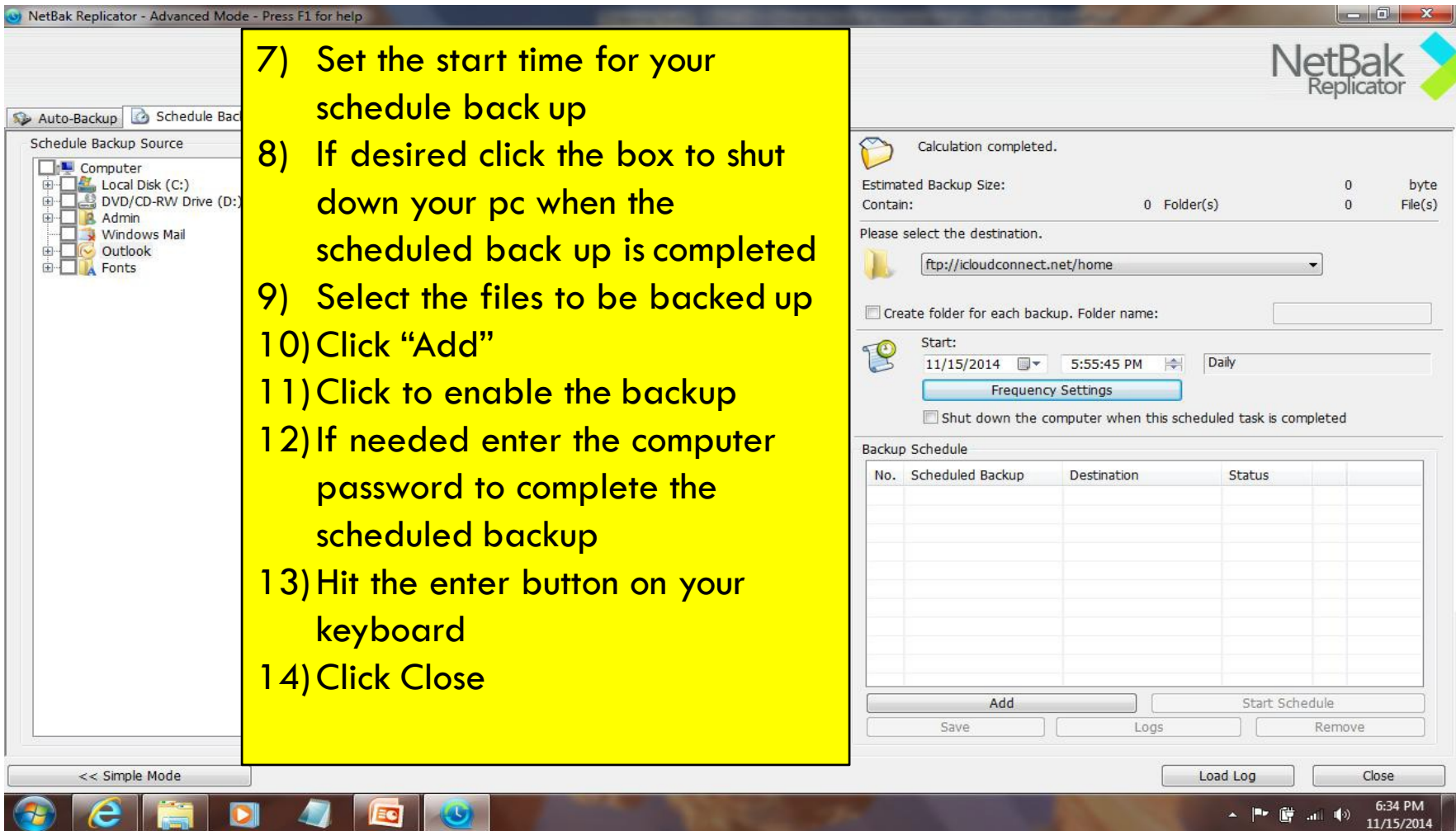
4) Enter your

- **User Name**
- **Password**
- Click the **box** next to "Remember user name and password"
- Click "**OK**"

Set Scheduled Backups (Continued)

- 5) Click the button marked **"Frequency Settings"**
- 6) Set your **"Scheduled Settings"** to repeat your scheduled backup and Click **"OK"**





For Additional Questions Visit us Online



Visit our Technical Support Center

<http://www.helpdesk.witsendtechnology.com/>